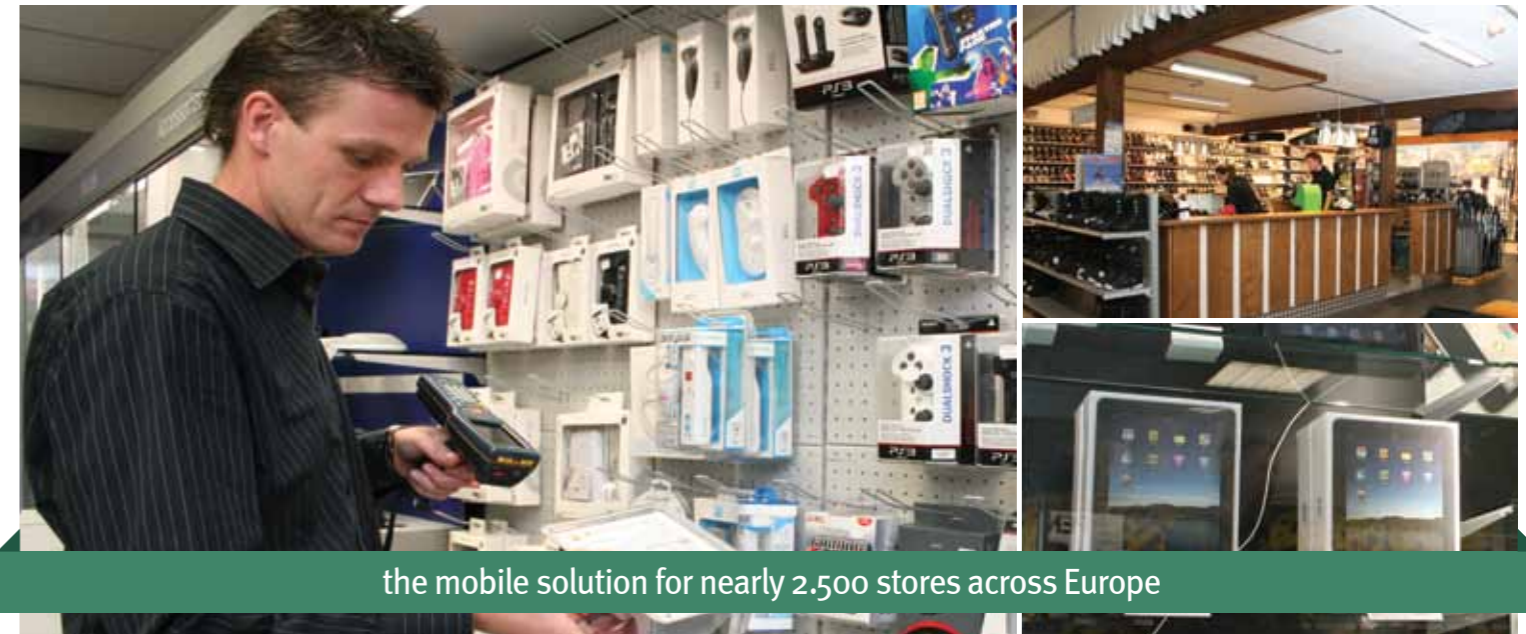




MobileFlow

mobile solutions for retail



the mobile solution for nearly 2,500 stores across Europe

Unisoft: the right software for retailers

Unisoft has offered innovative store solutions for over 25 years and is a leading Point-of-Sale supplier. Retailers such as Lifestyle, O'Neill, Dexcom Retail, M&S, Hunkemöller, Zeeman textielSupers, HANS, The Society Shop and T-Mobile have been customers for over years. Our retail software is currently used in 22 countries and is available in 17 languages. Herewith Unisoft is a European partner in retail software. The retail solutions are suitable for international retail chains, but also for local franchise organizations and independent entrepreneurs. 50.000 people in several lines of business, store environments and countries use the retail software from Unisoft on a daily basis.

Real time retailing, more insight information in your customer and above all, more time for your customer, it's all possible with Unisoft software. You can focus on your core business. You have a fast return on investment and the solutions provide a high profit. Unisoft is an organization with a pragmatic and professional attitude and understands your business. In addition, the software can be build modular, so you can grow in users, functionality and you can expand to other markets.

improved customer service • price and stock availability check • **user friendly** • usable in several organization structures • **full integration with store and retail solutions** • efficiency and flexibility for your merchandise and store processes



Van Liemptstraat 16
5145 RB WAALWIJK
The Netherlands

T + 31 (0)416 888 888
F + 31 (0)416 888 880

info@unisoft.nl
www.unisoft.nl



Increasing service and efficiency with MobileFlow

Keeping your inventory and order processing simple and efficient allows your staff to spend more time on customer interaction. In today's highly competitive retail environment, mobile solutions represent an outstanding means of increasing efficiency, staff productivity and customer satisfaction.



Our MobileFlow solution will enable your staff in the store (or the stockroom) to easily scan, retrieve and process information relating to your merchandise and pricing. Thanks to the very latest technology, this can be delivered with a range of options such as VOIP/Wireless and RFID. Your retail environment is the starting point for the mobile solution.

Increasing customer service

You will be able to replenish your inventory more quickly, enhance the in-stock positions, increase pricing accuracy and reduce mark down time. Providing accurate information to your customer or even capturing the transaction when it is happening, mobile solutions offer many different ways to increase customer service.



Check price and stock availability

Hand-held computers and barcode scanners allow clerks to check prices as they stock shelves. Small, lightweight terminals are cost-effective options for order entry, price management and a range of other in store tasks. And if you add mobile printing capability, your store workers can generate new barcode labels whenever they need to do so.

Efficiency and flexibility for your merchandise and store processes

Portable scan terminals will facilitate accurate merchandise and shipment verification, up-to-date files and immediate replenishment. MobileFlow can be adapted to your needs. In cases of online use (e.g. Wireless / LAN), your supply chain is fully online and your merchandise will be completely visible.



Key MobileFlow functionalities:

Merchandise processes	Store processes
Goods received	Article search
Delivery notes	Scanning for price and stock information
Stock	Price changes
Orders	Sales (Queue Busting)
Branch transfers	
Inventory	

What MobileFlow delivers to you:

- > Full integration with store and retail solutions
- > Microsoft Mobile Certified for independent choice of hardware vendors
- > Image and product information for loss prevention
- > The mobile solution for nearly 2.500 stores across Europe



Customer references:



Real time retailing



More information about MobileFlow?

Please do not hesitate to contact us: T +31 (0)416 888 888.

